



**The Slovenian Node
of METROFOOD-RI**



JSI - Mass spectrometry: UPLC-qTOF-MS/MS, ICP-MS, ICP-MS QQQ, LA-ICP-MS, LC-ICP-MS, GC-ICP-MS, SP-ICP-MS, GC(IT)MS, GC-MSD, LC-MS/MS; IRMS: EA-IRMS, GC-C-IRMS, DI-IRMS, Py-IRMS, MC-ICP-MS; Spectrophotometry: HG AFS, CV AFS, CV AFS, Raman spectroscopy; Nuclear methods: TRIGA MARK II nuclear reactor, alpha, beta and gamma counting;
UL-BF - GC-MS, LC-MS, HPLC, ICP-MS, encapsulation (spray drying, freeze-drying, microencapsulation), rheological instruments, bioreactors, sensory lab, microbiology labs Infrastructural Centre

ZIM (Collection of Industrial Microorganisms)
UL-VF - MALDI-TOF, MS-GC, PCR, NGS and other laboratory equipment
NIB - qPCR, dPCR, microbiology, growth chambers and experimental greenhouse, electron microscopy
ZRS Koper - LC-MS/MS (QQQ), GC-MS, GC-S/Sless-CoolOnC, HPLC (DAD/RID/FD)
KIS - Analysis of pesticide residues: GC-MS, LC-MS/MS
NLZOH - GC-MS (Q GC/MSn), LC-MS/MS (Q-Trap, LC/q TOF-MS), ICP-MS



PARTNERS

Jožef Stefan Institute
Jožef Stefan Institute is the leading Slovenian scientific research institution covering a broad spectrum of basic and applied research. Department of Environmental Sciences (DES) focus on multidisciplinary research with emphasis of physical, chemical, biological processes that influence the environment, food and health.
www.ijs.si

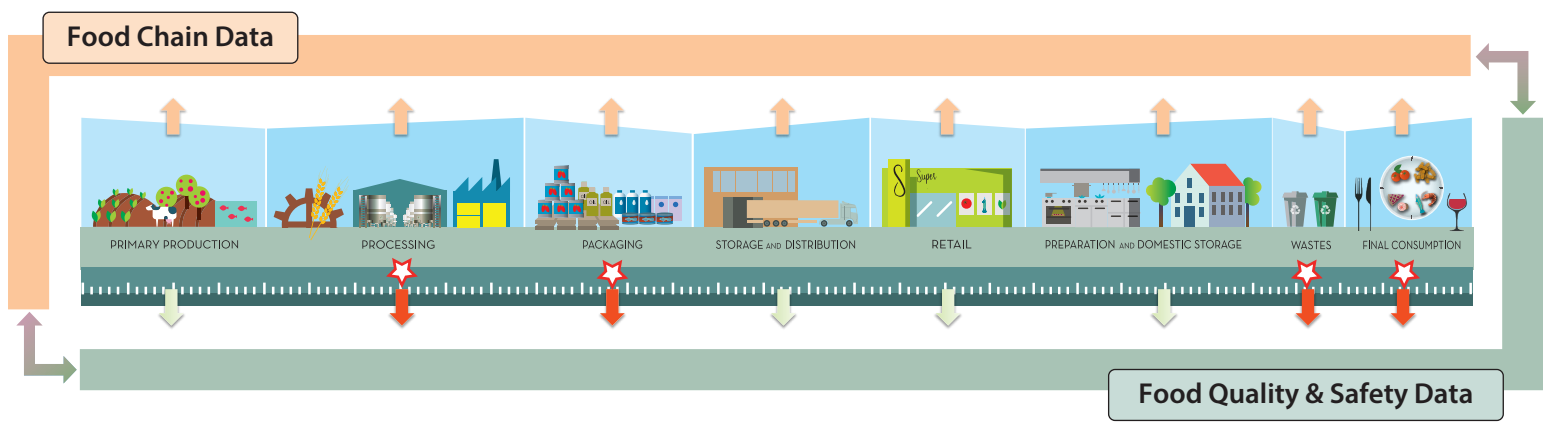
University of Ljubljana (UL)
University of Ljubljana (UL) is the oldest and largest higher education and scientific research institution in Slovenia. University with its rich tradition was founded in 1919. It has approximately 38,000 undergraduate and postgraduate students and employs approximately 6,000 higher education teachers, researchers, assistants and administrative staff in 23 faculties and three arts academies.
www.uni-lj.si

National Institute of Biology
National Institute of Biology - basic and applied research in biology and biotechnology, in development of novel molecular biology based diagnostic methods, and in method validations and standardization.
www.nib.si

The Science and Research Centre Koper (ZRS Koper)
Highly specialized laboratory, working predominately in the field of olive oil quality and authenticity. Holder of the national standard for amount of substance/organic compounds, particularly fatty acids, sterols, biophenols, tocopherols, waxes, triacylglycerols and stigmastadienes in biological materials and food. Laboratory is designated as official laboratory for Slovenian and Czech Agriculture and Food Inspection Authority.
www.zrs-kp.si

The Agricultural Institute of Slovenia
Is a public non-profit research institute that performs fundamental, applied and development research and specialist tasks in agriculture. Department Central Laboratories are the leading laboratories in the area of agricultural chemistry and oenology in Slovenia. Central Laboratories are accredited according to standard SIST EN ISO/IEC 17025.
www.kis.si

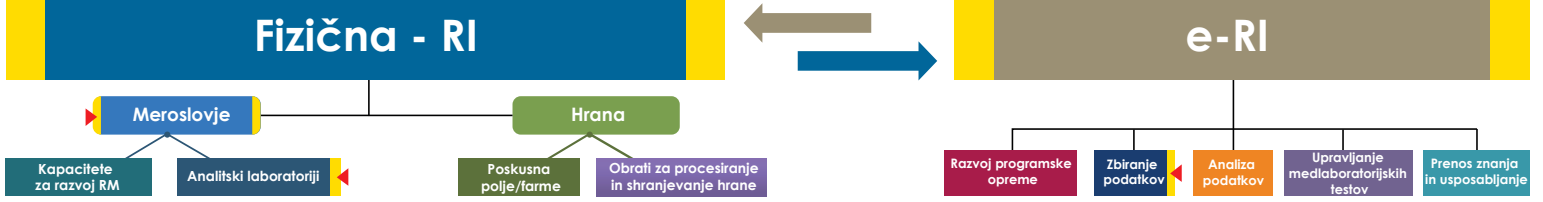
The National Laboratory of Health, Environment and Food (NLZOH)
The National Laboratory of Health, Environment and Food (NLZOH) is the central and the largest laboratory for public health, dealing with hygienic and health ecological activities, environment protection problems, microbiological professional health and research activities and chemical analyses of samples of different kind.
www.nlzoh.si



Contact: **Prof. dr. Nives Ogrinc**
Institute / Address: **Jožef Stefan Institute, Department of Environmental Sciences, Jamova 39 - 1000 Ljubljana, SLOVENIA**
E-mail: **nives.ogrc@ijs.si**
National webpage address: **www.metrofood.si**

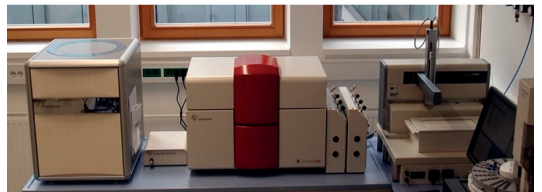


The Slovenian Node of METROFOOD-RI



JSI - Mass spectrometry: UPLC-qTOF-MS/MS, ICP-MS, ICP-MS QQQ, LA-ICP-MS, LC-ICP-MS, GC-ICP-MS, SP-ICP-MS, GC(IT)MS, GC-MSD, LC-MS/MS; IRMS: EA-IRMS, GC-C-IRMS, DI-IRMS, Py-IRMS, MC-ICP-MS; Spectrophotometry: HG AFS, CV AFS, CV AFS, Raman spectroscopy; Nuclear methods: TRIGA MARK II nuclear reactor, alpha, beta and gamma counting; **UL-BF** - laboratorij za kasulacijo (aparatura za sušenje z razprševanjem, liofilizator, mikrokapsulator), reometri, bioreaktorji, senzorični laboratorij, mikrobiološki laboratorij, Infrastrukturni center

ZIM (zbirka industrijskih mikroorganizmov)
UL-VF - MALDI-TOF, MS-GC, PCR, NGS in druga laboratorijska oprema
NIB - qPCR, dPCR, mikrobiologija, rastne komore in poskusni rastlinjak, elektronska mikroskopija
ZRS Koper - LC-MS/MS (QQQ), GC-MS, GC-S/Sless-CoolOnC, HPLC (DAD/RID/FD)
KIS - Analize ostankov fitofarmaceutskih sredstev: GC-MS, LC-MS/MS
NLZOH - GC-MS (Q GC/MSn), LC-MS/MS (Q-Trap, LC/q TOF-MS), ICP-MS



PARTNERJI

Institut "Jožef Stefan"
 Jožef Stefan Institute
 Je največji raziskovalno-razvojni inštitut v Sloveniji, ki pokriva različna tako bazična kot tudi aplikativna raziskovalna področja. Odsek za znanosti o okolju raziskuje prepletanje fizikalnih, kemijskih in bioloških procesov, ki oblikujejo naše okolje, zdravje in prehrano. Naše raziskave so interdisciplinarne in vključujejo anorganska in organska onesnaževala, nanodelce, radiokemijo in določanje pristožnosti in izvora živil. www.ijs.si

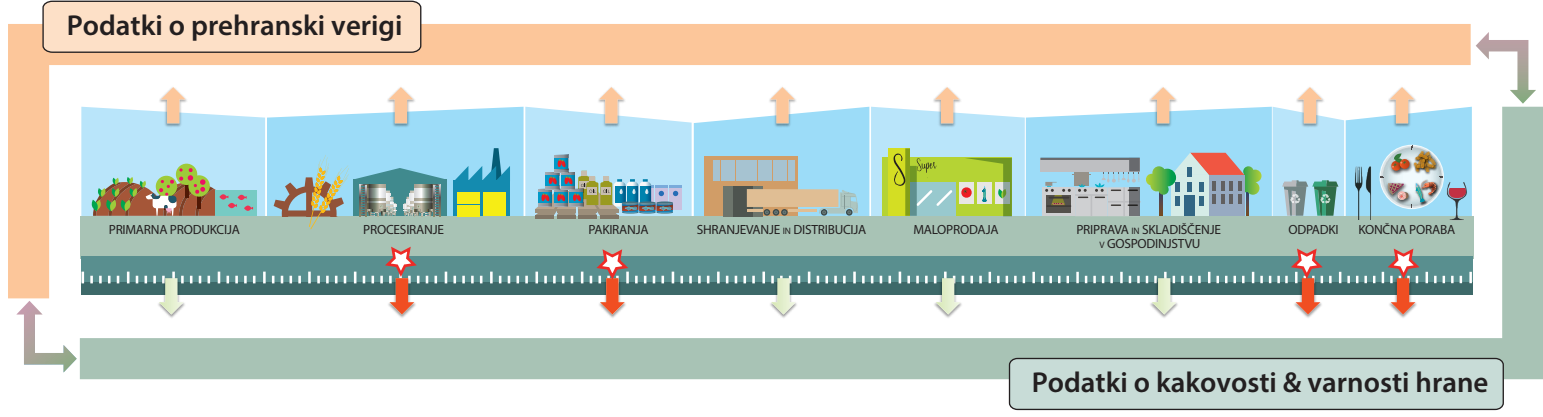
Univerza v Ljubljani (UL)
 University of Ljubljana
 Je najstarejša in največja visokošolska ter znanstveno raziskovalna ustanova v Sloveniji, ustanovljena leta 1919. Danes jo obiskuje skoraj 38.000 študentov, zaposluje pa več kot 6000 visokošolskih učiteljev, raziskovalcev, asistentov in strokovnih in administrativnih sodelavcev na 23 fakultetah in treh umetniških akademijah. www.uni-lj.si

Nacionalni inštitut za biologijo
 NIB
 Nacionalni inštitut za biologijo
 Nacionalni inštitut za biologijo - temeljne in uporabne raziskave na področju biologije in biotehnologije, razvoju novih diagnostičnih metod, ki temeljijo na molekularni biologiji, ter validacija in standardizacija metod. www.nib.si

Znanstveno-raziskovalno središče Republike Slovenije Koper
 ZRS
 Visoko specializiran laboratorij za ugotavljanje kakovosti in potvorb oljčnega olja. Nosilec nacionalnega etalona za množino snovi/organske spojine zlasti maščobne kisline, steroli, biofenoli, tokoferoli, voski, triacilgliceroli, stigmastadieni/v bioloških materialih in hrani. Nacionalni referenčni laboratorij za oljčno olje za Slovenijo in za Češko republiko. www.zrs-pi.si

Kmetijski inštitut Slovenije
 Agricultural Institute of Slovenia
 Je javni raziskovalni zavod, ki izvaja temeljne, uporabne in razvojne raziskave ter strokovne naloge v kmetijstvu. Oddelek Centralni laboratorij je vodilni laboratorij na področju agrokemije in enologije v Sloveniji. Centralni laboratorij je akreditiran po standardu SIST EN ISO/IEC 17025 in izvaja analize ostankov fitofarmaceutskih sredstev, tal, gnojil, krme, medu in vina. www.kis.si

Nacionalni laboratorij za zdravje, okolje in hrano
 Nacionalni laboratorij za zdravje, okolje in hrano je osrednji, največji slovenski javnozdravstveni laboratorij, ki se ukvarja s higiensko in zdravstveno ekološko dejavnostjo, s problematiko varovanja okolja, z mikrobiološko strokovno zdravstveno in raziskovalno dejavnostjo ter s kemijskimi analizami. www.nlzoh.si



Contact: **Prof. dr. Nives Ogrinc**
 Institute / Address: **Jožef Stefan Institute, Department of Environmental Sciences, Jamova 39 - 1000 Ljubljana, SLOVENIA**
 E-mail: **nives.ogrc@ijs.si**
 National webpage address: **www.metrofood.si**